



Kavel 71 Kavel 72 Kavel 73 Kavel 74



Kavel 71



Kavel 74 Kavel 73 Kavel 72 Kavel 71



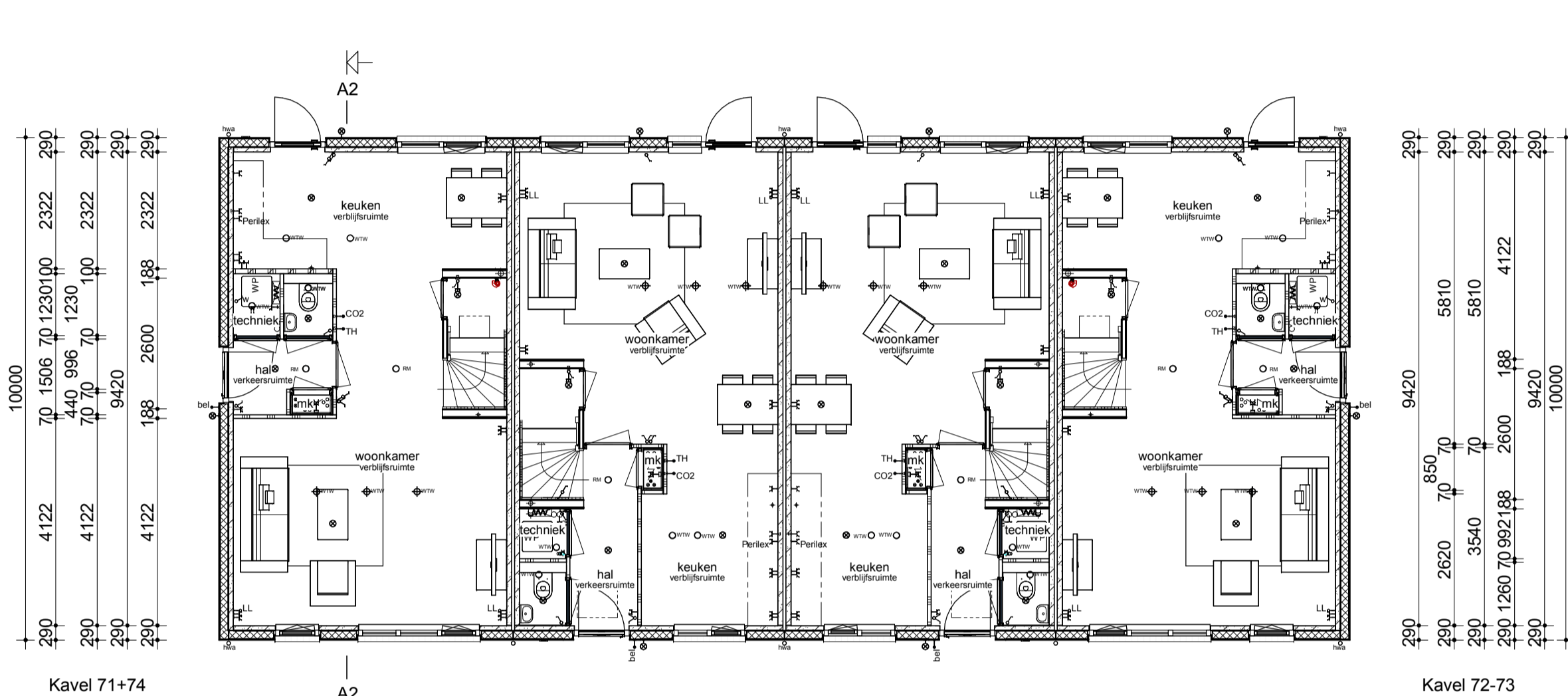
Kavel 74

Voorgevel

Linker zijgevel

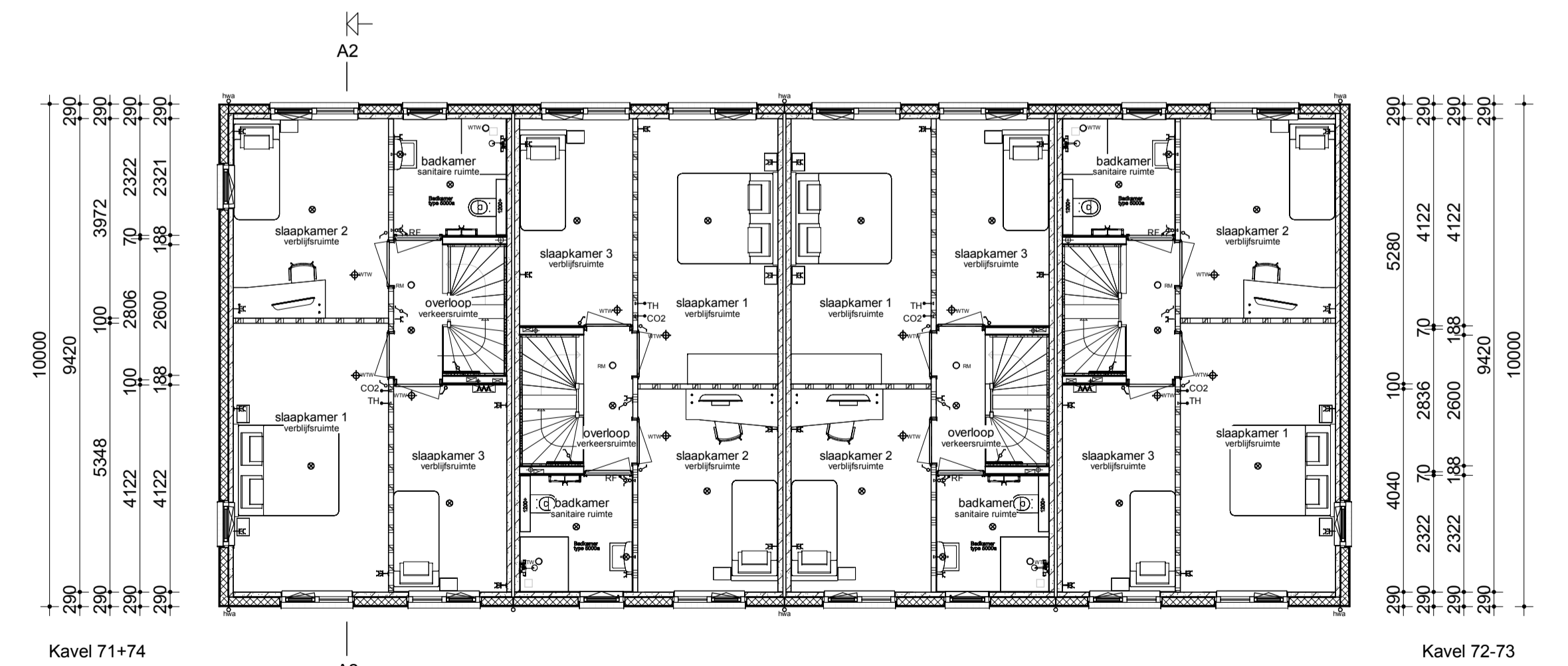
Achtergevel

Rechter zijgevel



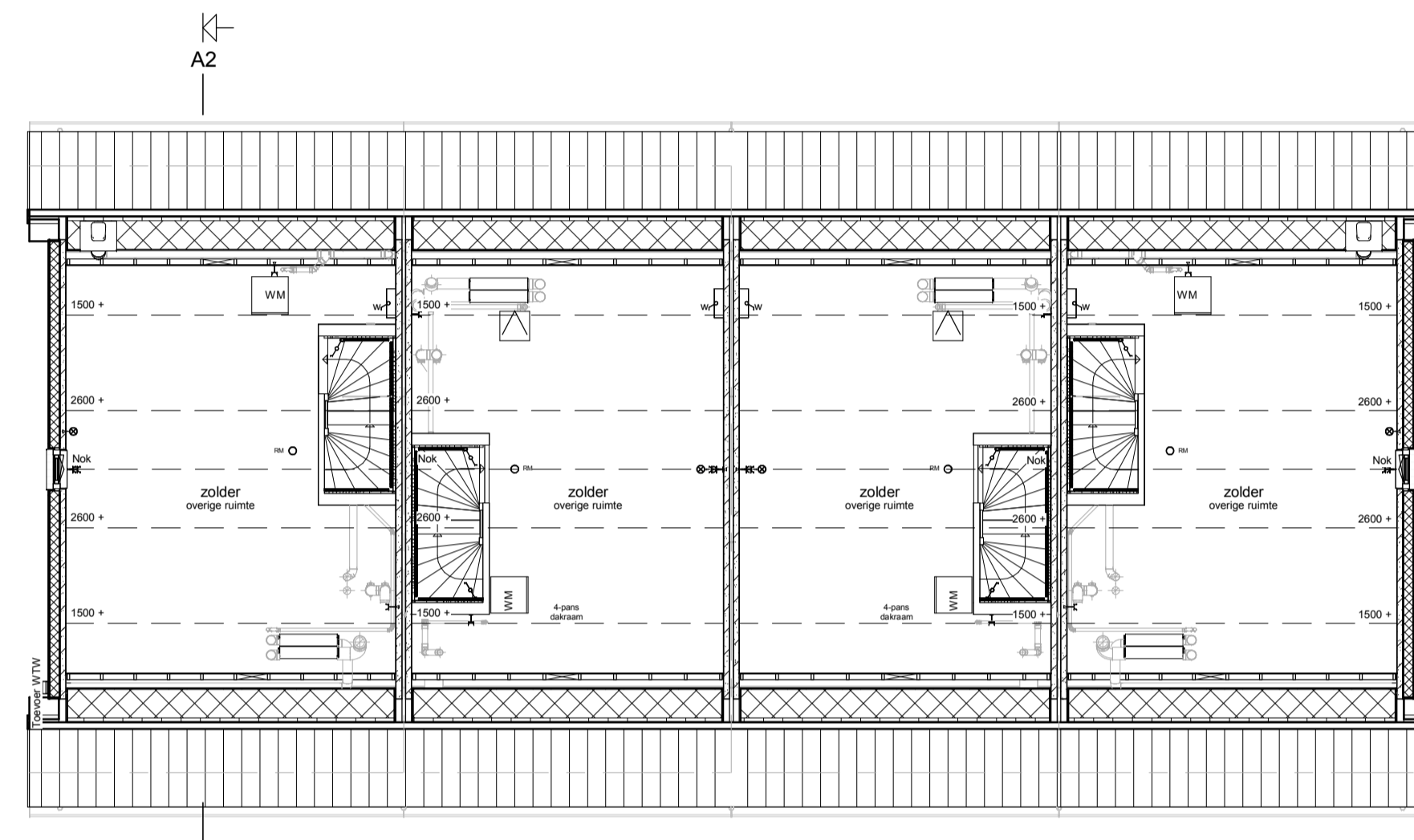
| | | | | | | | | | | | | | | | | | | |
|----------|------|----------|------|----------|------|----------|------|------|------|------|------|------|------|------|------|-----|------|-----|
| 290 | 930 | 70 | 980 | 70 | 2115 | 1275 | 260 | 5140 | 260 | 5140 | 260 | 1275 | 2115 | 70 | 980 | 70 | 930 | 290 |
| 290 | 1980 | 70 | 2115 | 1275 | 260 | 1275 | 3865 | 260 | 3865 | 1275 | 260 | 1275 | 2115 | 70 | 1980 | 290 | | |
| 290 | 1060 | 850 | 70 | 2115 | 1275 | 260 | 1275 | 3865 | 260 | 3865 | 1275 | 260 | 1275 | 2115 | 70 | 850 | 1060 | 290 |
| 290 | 5440 | 260 | 1275 | 70 | 70 | 2210 | 260 | 2210 | 70 | 70 | 1275 | 260 | 5440 | 290 | | | | |
| 290 | 5440 | 260 | 930 | 70 | 1350 | 70 | 2720 | 260 | 2720 | 70 | 1350 | 70 | 930 | 290 | | | | |
| 290 | 5440 | 260 | 5140 | 260 | 5140 | 260 | 5440 | 290 | | | | | | | | | | |
| 290 | 5860 | 5400 | 5400 | 5860 | 290 | | | | | | | | | | | | | |
| Kavel 71 | | Kavel 72 | | Kavel 73 | | Kavel 74 | | | | | | | | | | | | |

Begane grond



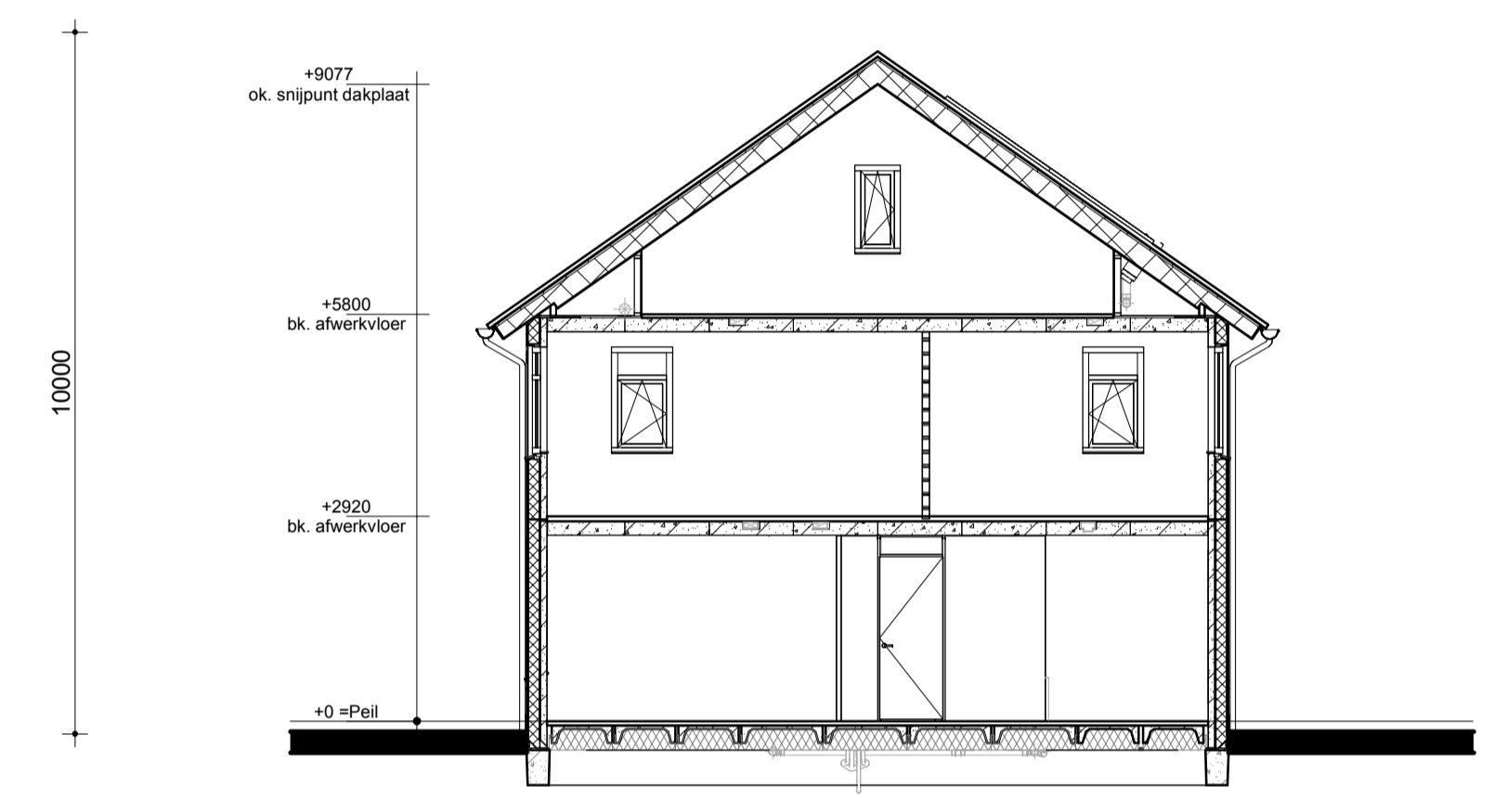
| | | | | | | | | | | | | | | | | | | |
|----------|------|----------|------|----------|------|----------|------|-----|------|-----|------|-----|------|------|------|-----|------|-----|
| 290 | 3090 | 100 | 2250 | 260 | 2250 | 100 | 2790 | 260 | 2790 | 100 | 2250 | 260 | 5440 | 290 | | | | |
| 290 | 3090 | 100 | 975 | 1275 | 260 | 1275 | 975 | 100 | 2790 | 260 | 2790 | 100 | 975 | 1275 | 975 | 100 | 3090 | 290 |
| 290 | 3090 | 100 | 2250 | 260 | 2250 | 100 | 2790 | 260 | 2790 | 100 | 2250 | 260 | 2250 | 100 | 3090 | 290 | | |
| 290 | 5440 | 260 | 5140 | 260 | 5140 | 260 | 5440 | 290 | | | | | | | | | | |
| 290 | 5860 | 5400 | 5400 | 5860 | 290 | | | | | | | | | | | | | |
| Kavel 71 | | Kavel 72 | | Kavel 73 | | Kavel 74 | | | | | | | | | | | | |

Verdieping



| | | | | | | | | | | | | |
|----------|------|----------|------|----------|------|----------|------|------|-----|------|------|-----|
| 290 | 4165 | 1275 | 260 | 1275 | 3865 | 260 | 3865 | 1275 | 260 | 1275 | 4165 | 290 |
| 290 | 5440 | 260 | 5140 | 260 | 5140 | 260 | 5440 | 290 | | | | |
| 290 | 5860 | 5400 | 5400 | 5860 | 290 | | | | | | | |
| Kavel 71 | | Kavel 72 | | Kavel 73 | | Kavel 74 | | | | | | |

Zolder



Doorsnede A2-A2

Renvooi

- Metselwerk
- Isolatie
- Betonnen wand
- Kalkzandsteen wand
- Lichte scheidingswand
- Dragend knieschot incl. afneembaar paneel tpv kruis
- Vloerverwarmingsverdeler
- WTW box
- WP Warmtepomp
- Omvormer t.b.v. PV-panelen
- Meterkast
- Kruipruik
- WM Opstelplaats wasmachine
- Elektrische radiator
- Gierzwaluw nestkast
- Enkele schakelaar
- Dubbele schakelaar
- Wisselschakelaar
- Standen schakelaar t.b.v. ventilatiesysteem
- Enkele wandcontactdoos met randaarde
- Dubbele wandcontactdoos geaard (boven elkaar)
- Dubbele wandcontactdoos geaard (naast elkaar)
- Plafondlichtpunt
- Wandlichtpunt
- RM Rookmelder
- WTW retourventiel
- WTW inblaasventiel
- WTW retourventiel wand
- TH Thermostaat
- THL Thermostaatleiding
- LL Loze leiding
- Bel Beldrukker
- CO2 CO2 bedieningspaneel
- HWA Hemelwatervoer



| | |
|---|---|
| opmerkingen/gecontroleerd: | Mfj: Dat: d.d. Omschrijving afdragen: |
| Bouwconcept: | project: 12 woningen type "Maerkhof" Eengezinswoningen Plan "Opbreuk Oost fase 4" te Rijssen |
| IDENTIS DOOR ROOSDOM TIJHUIS | opdrachtgever: Bouwbedrijf Roosdom Tijhuis B.V. |
| RoosdomTijhuis | onderdeel: Verkooptekening kavel 71-74 |
| Bouwbedrijf Roosdom Tijhuis bv Julesstraat 6 Postbus 237 7460 AE RUSSEN TELEFOON 0548 51 80 24 E-MAIL info@roosdomtijhuis.nl WEBSITE www.roosdomtijhuis.nl | ontwerp: MSc. B. Nijland schaal: 1:100 |
| datum: 17-03-2026 | tek. nr.: V-01b werk nr.: 7644 |